

## The People of the Seattle Kiwanis Memorial Fund

### Ken North



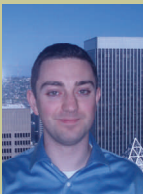
Ken North president of the Seattle Kiwanis Memorial Fund, past president and Lt. Governor of the Kiwanis Club of Seattle is also president and founder of Seattle Savings bank. Ken has lead both organizations for the past nine years achieving successful results.

### Charter Harrison



Charter Harrison has been involved in the Seattle Kiwanis Club for over 8 years and has served as Lieutenant Governor of Kiwanis Division 26, as well as President treasurer and Secretary of the Kiwanis Club of Seattle. He has served as the Portfolio Manager of the Seattle Kiwanis Club funds for over eight years.

### Aron English



Aron English is currently serving as President of the Seattle Kiwanis Club and Lieutenant Governor of Kiwanis Division 26. He serves as Assistant Portfolio Manager for the Seattle Kiwanis Club funds and is a Level Three Charter Financial Analyst (CFA) Candidate.



## The Kiwanis Club of Seattle and Memorial Fund Charitable Giving

### Cobb Center

The Cobb Center is a structured, caring residential program for boys ages 5-16 whose emotional/behavioral problems prevent them from living in their own homes or in foster-adoptive homes. The Seattle Kiwanis Club hosts events like relay races and trips to Mariner's games for the boys at Cobb Center.

### First Place School

First Place School is a service agency devoted to educating and nurturing children whose families struggle with the risk or reality of homelessness.

### Atlantic Street Center

Atlantic Street Center is a private, non-profit organization that provides mental health counseling, youth development activities, early literacy programs, and parent and family support services to approximately 3,000 multi-ethnic, low-income families in Seattle's central and southeast neighborhoods.

### SIGN

Surgical Implant Generation Network (SIGN) is a group of physicians and surgeons who travel to developing countries to perform orthopedic surgical procedures on patients with fractured bones. These doctors train local surgeons in the procedures and provide medical equipment so that local surgeons can continue to treat patients after the SIGN doctors return home. SIGN has over 130 projects in operation around the world; several in Vietnam, Thailand, Indonesia, Bangladesh, India, Nepal, Venezuela, Honduras, Mexico, El Salvador, the Philippines and has recently established centers in Africa. The Seattle Kiwanis Club recently donated \$15,000 on behalf of the Seattle Kiwanis Memorial Fund to open a new surgical center in Tansen, Nepal.

Rise N Shine  
Operation Nightwatch  
Campfire  
Seafair Scholarship  
Project Cool

K-Kids - First Place &  
Graham Hill Elem.  
Key Clubs - Franklin &  
Garfield High School  
Circle K - Seattle U.

*Seattle Kiwanis  
Memorial Fund*



Kiwanis Club of  
Seattle

*"Serving the  
Children of the  
World"*

Ken North

President

Seattle Kiwanis Memorial Fund

PO Box 736

Seattle, WA 98111

(206) 817-5369

ken@KenNorth.com

www.KiwanisSeattle.org

## *A Tradition of Service and a Call for Contributions*

The Kiwanis Club of Seattle was Organized in 1919, just two years after the international organization. In 1945, the Seattle Kiwanis Memorial Fund was established as a non-profit organization and is the community service arm of the club. Today, its members carry on the tradition of service through financial support and volunteer service. With a fund corpus of more than \$840,000 combined with a dedicated group of volunteers, the club continues to provide thousands of dollars in contributions and hundreds of volunteer hours per year to the community.

### **Contributions to the Seattle Kiwanis Memorial Fund will Grow and Give Indefinitely**

Your tax deductible contributions will grow tax free and give back to the community indefinitely. By donating to or listing the Seattle Kiwanis Memorial fund in your will, you will help future generations of children make the world a better place.

### **Seattle Kiwanis Memorial Fund Investment Performance**

From July 1, 2003 to July 1, 2007 the Seattle Kiwanis Memorial Fund general account returned a **15.98%** annualized IRR.

The Ed Beiersdorf Scholarship Fund returned a **15.42%** annualized IRR for the same 4 year period.

### **Recent Distributions to Charities and Community Projects by the Seattle Kiwanis Memorial Fund**

2002	\$24,105
2003	\$32,992
2004	\$32,573
2005	\$65,362
2006	\$37,091
2007	\$73,057

Distributions have risen with the increasing income and principal of the investment portfolios. When we find an exceptional need in the community in a year of good returns (+12%), we will dip into principal to make the project happen as we did in 2005 & 07 with the Cobb Center, a division of the Children's Home Society of Washington and SIGN.



### **Your Contributions Make a Difference!**

Each year, Kiwanis Clubs around the world donate millions of hours of time and over \$100 million USD. The Seattle Club alone donates thousands of hours and tens of thousands of dollars to deserving local organizations. With your help, we could do even more.

### **Give the Gift that Keeps Giving...**

We currently manage over \$840,000, which yields over \$40,000 of income annually, money we use to support deserving local charities. Over time, we hope to grow the size of our endowment through prudent investments and generous donations. Since Kiwanis is a non-profit organization, we can grow our investments tax free. Each dollar you donate will grow and continue to fund programs for years to come. You can choose which fund to donate to—our Memorial, or general purpose fund, our Scholarship fund, or our newly formed SIGN fund. Large contributions can establish their own fund for SKMF to manage under their own investment objectives and charitable mission.

### **Volunteer**

We are looking for volunteers to help with our programs! As working professionals, we know that it can be difficult to find time to volunteer, but we have seen that just a few hours a month can make a big difference. The following page contains a list of programs that the Seattle Kiwanis Club supports. If you would like to volunteer, please contact: **President@KiwanisSeattle.org**